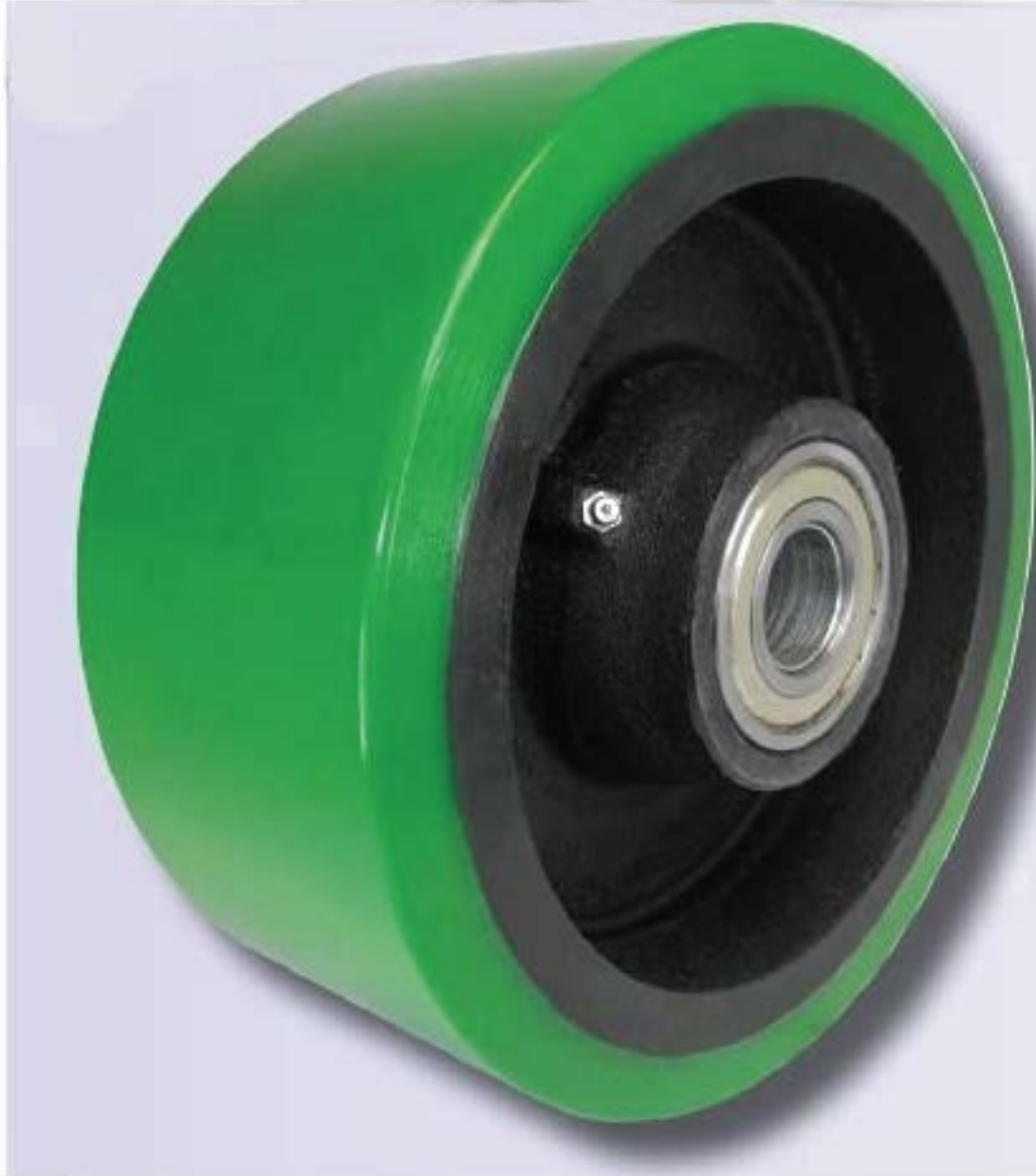


RUEDA POLIURETANO EN FIERRO DE TRABAJO EXTRA PESADO



- 3/4" Thick ultra strong polyurethane elastomer tread chemically bonded to a solid heavy-duty cast iron core.
- Combination of thick tread and heavy core, offers higher weight capacities and provides greater durability than other mold on polyurethane tread wheels.
- Optional precision ball bearings and tapered roller bearings offer higher weight capacities and require less effort to start up and maintain a rolling load.
- Provides excellent floor protection and quiet rolling operation.
- Color: Green on black.
- Durometer: 50 Shore D (+/-5).
- Temperature range: -40° F to 180° F.

Wheel Diameter	Tread Width	Hub Length	Load Capacity	Part Number	Replace ** with desired bearing code.			
					Plain Bore	Roller Bearings	Precision BB	Tapered Bearings
6	3	3-1/4	3000	EX60LG**	85	24,26	65,67	70,71
8	3	3-1/4	3500	EX80LG**	85	24,26	65,67	70,71
8	4	4-1/4	4000	EX80NG**	86	31,33	68	71,74
10	3	3-1/4	4000	EX10LG**	85	24,26	65,67	70,71
10	4	4-1/4	5500	EX10NG**	86	31,33	68	71,74
12	3	3-1/4	5000	EX12LG**	85	24,26	65,67	70,71
12	4	4-1/4	6500	EX12NG**	86	31,33	68	71,74

Bore & Bearing Sizes													
Bearing or Bore Code	24	26	31	33	65	67	68	70	71	74	85	86	92
Bearing or Bore Type	Roller Bearings				Sealed Precision BB			Tapered Bearings			Plain Bore		3/4 Roller w/Stl. Bushing
Inner Diameter	1	1-1/4	1-1/4	33	3/4	1	1	3/4	1	1-1/4	1-15/16	2-7/16	1/2